

# Osaka 3 P

Vertical glass-door ■ Remote



Disponibile con/Available with:



arneg • air • system



**arneg**

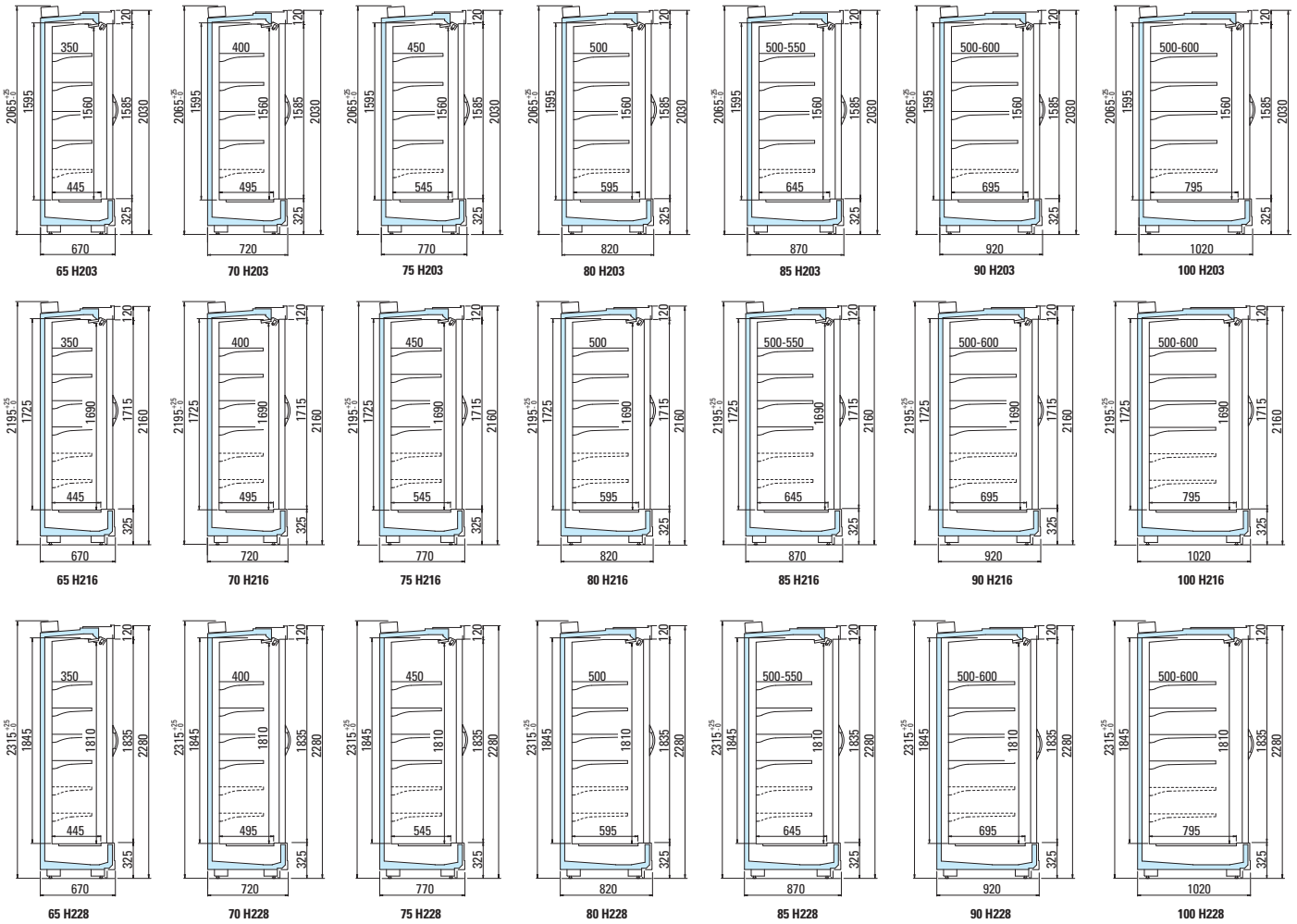
[www.arneg.it](http://www.arneg.it)



## Osaka 3 P

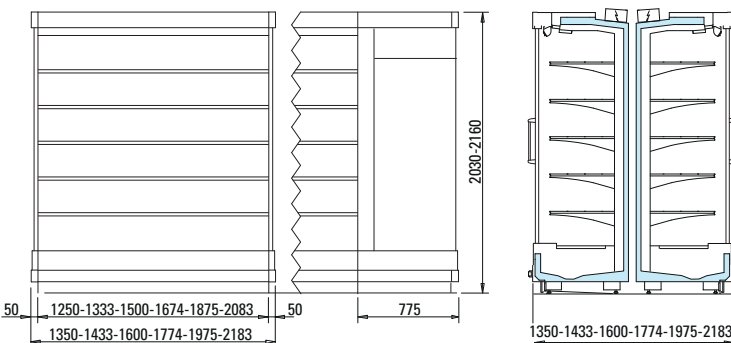
Osaka 3 P		Lunghezza senza spalle Length without ends mm	Temperatura di esercizio Working temperature °C	Superficie di esposizione frontale Opening display surface m <sup>2</sup>	Superficie di esposizione orizzontale Horizontal display surface m <sup>2</sup>	Capacità utile Net volume dm <sup>3</sup>
065	203	1250		1,93	2,30	717
		1875		2,90	3,45	1076
		2500		3,86	4,60	1435
		3750		5,79	6,90	2152
070		1250		1,93	2,61	816
		1875		2,90	3,92	1224
		2500		3,86	5,22	1631
		3750		5,79	7,83	2447
075		1250		1,93	2,92	914
		1875		2,90	4,39	1371
		2500		3,86	5,85	1828
		3750		5,79	8,77	2742
080		1250		1,93	3,24	1012
		1875		2,90	4,85	1518
		2500		3,86	6,47	2024
		3750		5,79	9,71	3037
085	1250	1,93	3,30	1029		
	1875	2,90	4,95	1543		
	2500	3,86	6,60	2058		
	3750	5,79	9,90	3087		
090	1250	1,93	3,36	1046		
	1875	2,90	5,04	1568		
	2500	3,86	6,72	2091		
	3750	5,79	10,08	3137		
065	216	1250	-1°C / +1°C 0°C / +2°C +2°C / +4°C	2,09	2,30	774
		1875		3,14	3,45	1162
		2500		4,19	4,60	1549
		3750		6,28	6,90	2323
070		1250		2,09	2,61	881
		1875		3,14	3,92	1321
		2500		4,19	5,22	1762
		3750		6,28	7,83	2642
075		1250		2,09	2,92	987
		1875		3,14	4,39	1481
		2500		4,19	5,85	1974
		3750		6,28	8,77	2962
080		1250		2,09	3,24	1094
		1875		3,14	4,85	1640
		2500		4,19	6,47	2187
		3750		6,28	9,71	3281
085		1250		2,09	3,30	1110
		1875		3,14	4,95	1665
		2500		4,19	6,60	2221
		3750		6,28	9,90	3331
090		1250		2,09	3,36	1127
		1875		3,14	5,04	1691
		2500		4,19	6,72	2254
		3750		6,28	10,08	3381

Contenuto modificabile senza preavviso. Content can be changed without notice.



Osaka 3 P Testate/Head-cases	Lunghezza totale External length	Temperatura di esercizio Working temperature	Superficie di esposizione frontale Opening display surface	Superficie di esposizione orizzontale Horizontal display surface	Capacità utile Net volume
	mm	°C		m <sup>2</sup>	dm <sup>3</sup>
203	1350	-1°C/+1°C 0°C/+2°C +2°C/+4°C	1,93	2,92	914
	1433		2,06	3,10	975
	1600		2,32	3,50	1097
	1774		2,59	3,92	1224
	1975		2,82	4,39	1337
2183	3,12		4,72	1478	
216	1350		2,09	2,92	987
	1433		2,22	3,10	1048
	1600		2,50	3,50	1185
	1774		2,80	3,92	1322
	1975		3,05	4,39	1481
	2183	3,38	4,72	1596	

Contenuto modificabile senza preavviso. Content can be changed without notice.



LEARN MORE

# Osaka 3 P

Vertical glass-door ■ Remote

Disponibile anche con l'innovativa tecnologia ARNEG AIR SYSTEM  
Available also with the innovative ARNEG AIR SYSTEM technology



arneg • air • system

Performances:

SOLO / ONLY

2°C

PRESERVATION  
TEMPERATURE RANGE  
PRESERVATION  
TEMPERATURE RANGE

CONSUMO  
ENERGETICO

-37%

ENERGY  
CONSUMPTION

NO DEFROST

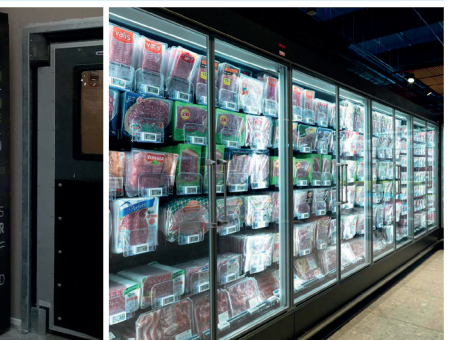


≥ 0°C

TEMPERATURA  
24/24h COSTANTE



24/24h  
CONSTANT TEMPERATURE



10/10/2017



arneg

www.arneg.it

